

BCE



Basic Pedestal

Self Priming Centrifugal Pump

Model 03H1-B

Size 3" x 3"

PUMP SPECIFICATIONS

Size: 3" x 3" (76 mm x 76 mm) N.P.T. - Female

Casing: Aluminum No. 356-T6.

Maximum Operating Pressure 125 psi (862 kPa).*

Enclosed Type, Five Vane Impeller: Almag No. 35.
Handles 7/16" (11 mm) Diameter Spherical Solids.

Impeller Shaft: Alloy Steel No. 4150M.

Replaceable Wear Rings: Copper Alloy C93200.

Pedestal: Gray Iron No. 30.

Seal Plate: Almag No. 35.

Radial and Thrust Bearings: Open Single Row Ball.

Bearing Lubrication: SAE No. 30 Non-Detergent Oil.

Shaft Sleeve: Alloy Steel No. 4130.

Flanges: Aluminum No. 356-T6.

Gaskets: Composition Cork.

Hardware: Standard Plated Steel.

Optional Equipment: Victaulic™ Flanges.

**Consult Factory for Applications Exceeding Maximum Pressure and/or Temperature Indicated.*

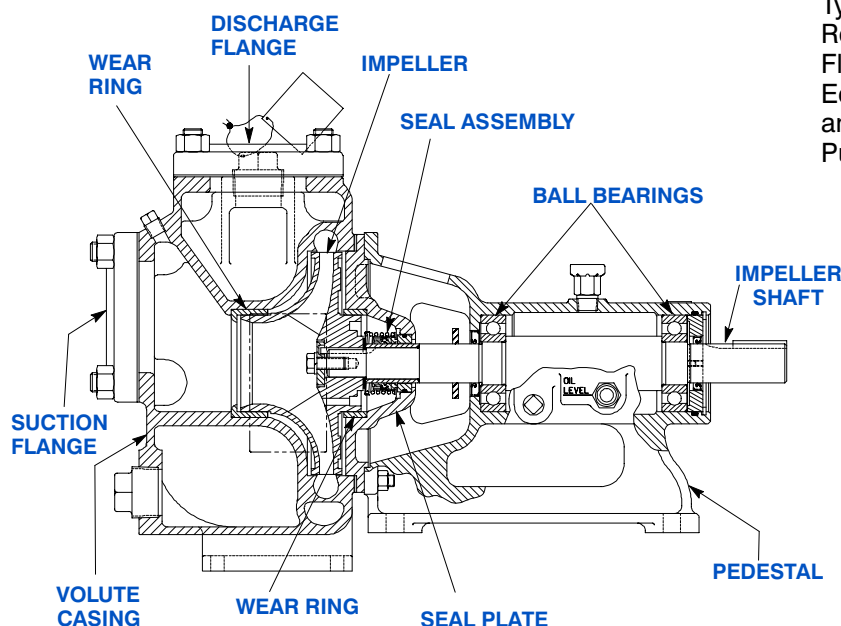
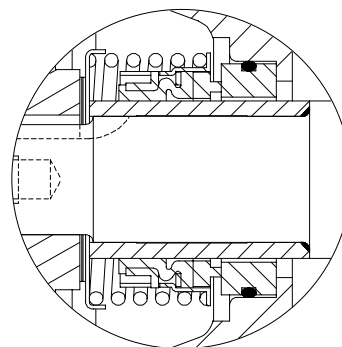
Victaulic is a Registered Trademark of Victaulic Company of America.



SEAL SPECIFICATION

Type 2 Mechanical, Self-Lubricated. Carbon Rotating Face. Ni-Resist Stationary Face. Fluorocarbon Elastomers (DuPont Viton® or Equivalent). Stainless Steel No. 18-8 Cage and Spring. Maximum Temperature of Liquid Pumped, 160°F (71°C).*

SEAL DETAIL



COURTESY OF
MASCOTT EQUIPMENT COMPANY
Portland Seattle Tri-Cities
www.mascottec.com

Printed in U.S.A.

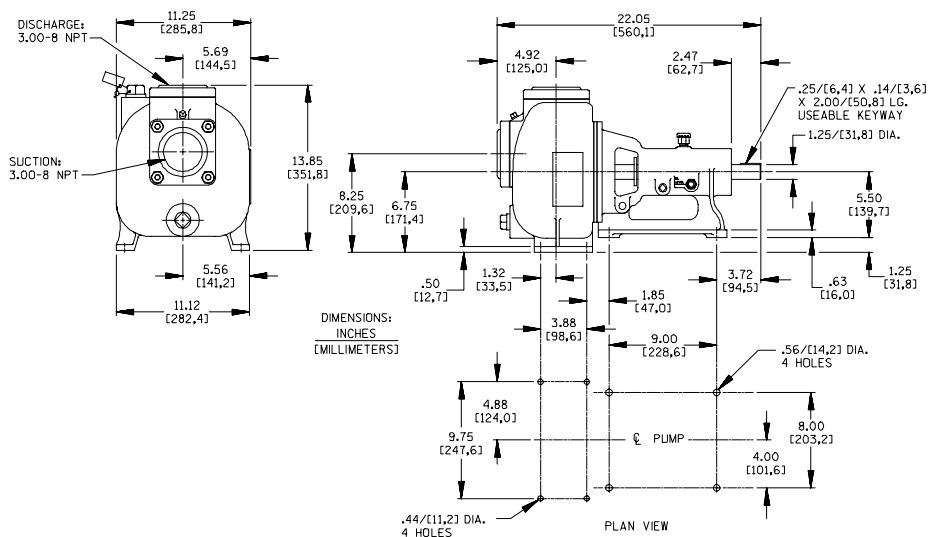
Specification Data

SECTION 30, PAGE 1550

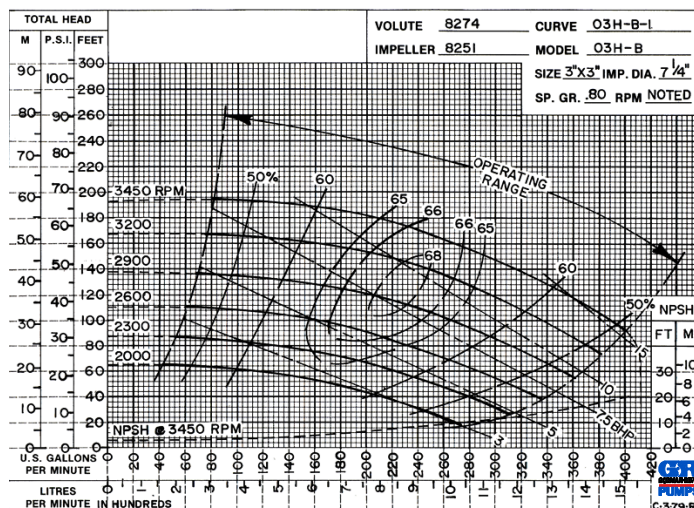
APPROXIMATE
DIMENSIONS and WEIGHTS

NET WEIGHT:
SHIPPING WEIGHT:
EXPORT CRATE:

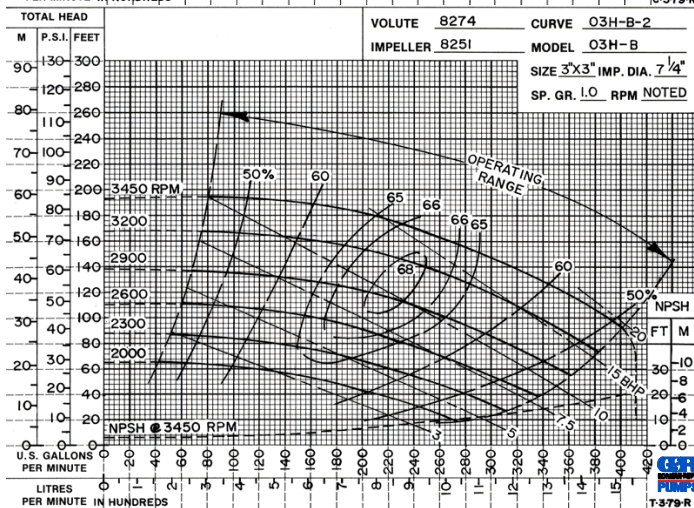
74 LBS. (33,5 KGS.)
87 LBS. (39,4 KGS.)
8.6 CU. FT. (0,24 CU. M.)



PERFORMANCE
BASED ON
PETROLEUM



PERFORMANCE
BASED ON
WATER



THE GORMAN-RUPP COMPANY • MANSFIELD, OHIO

GORMAN-RUPP OF CANADA LIMITED • ST. THOMAS, ONTARIO, CANADA

Specifications Subject to Change Without Notice

Printed in U.S.A.